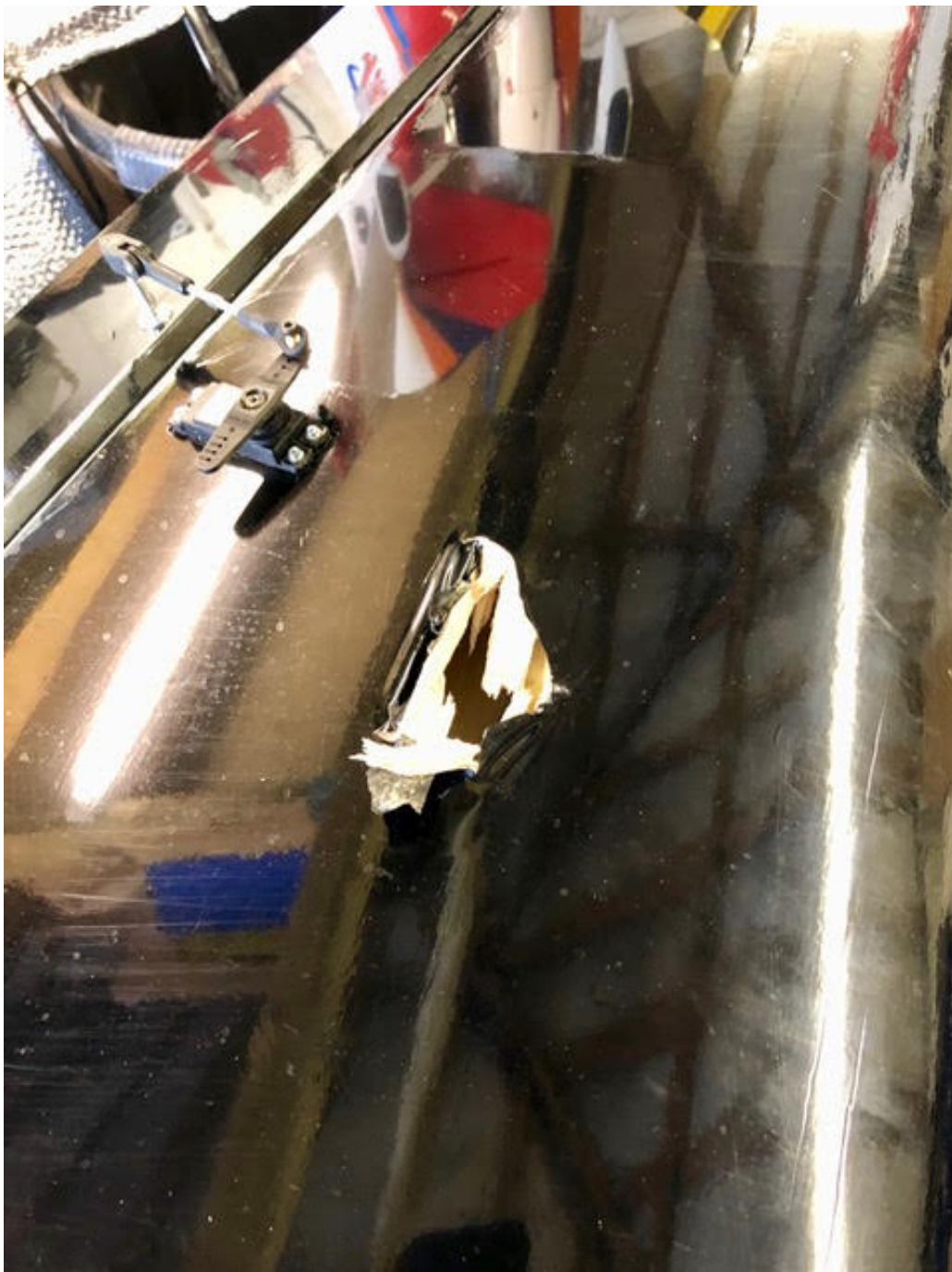


Photos of the SBach re-build, 6

Next up, the wings and I was not looking forward to this part as my memory told me that one was in a bit of a state!

Funny how memory can play tricks with you, damage was nowhere near as bad as I remembered and considering the state of the fuse it really is quite amazing. However, I tell myself that it must have been good flying to have landed it level in the middle of that ploughed field!

One wing, looks like a spat puncture:



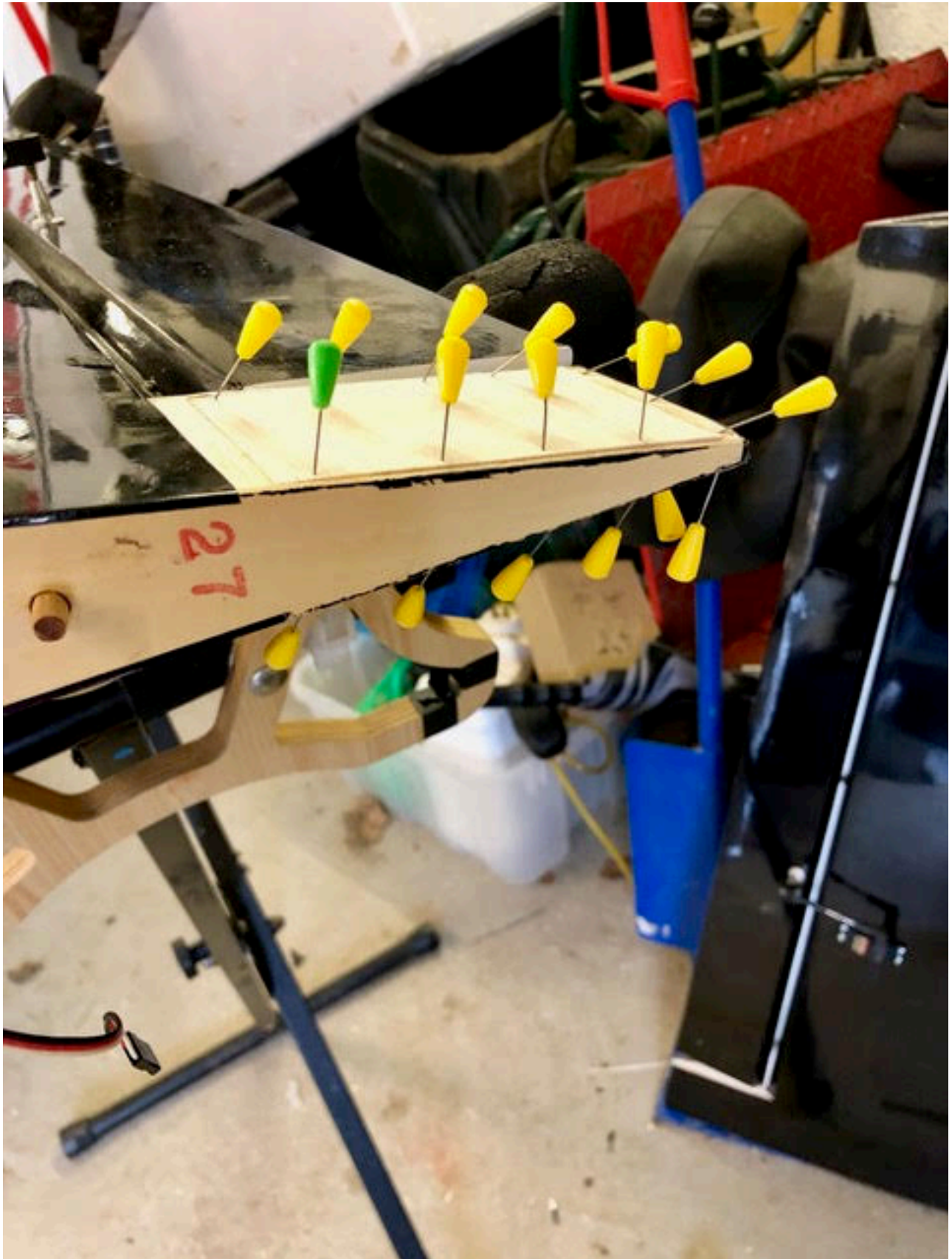
Other wing, goodness knows what caused this:

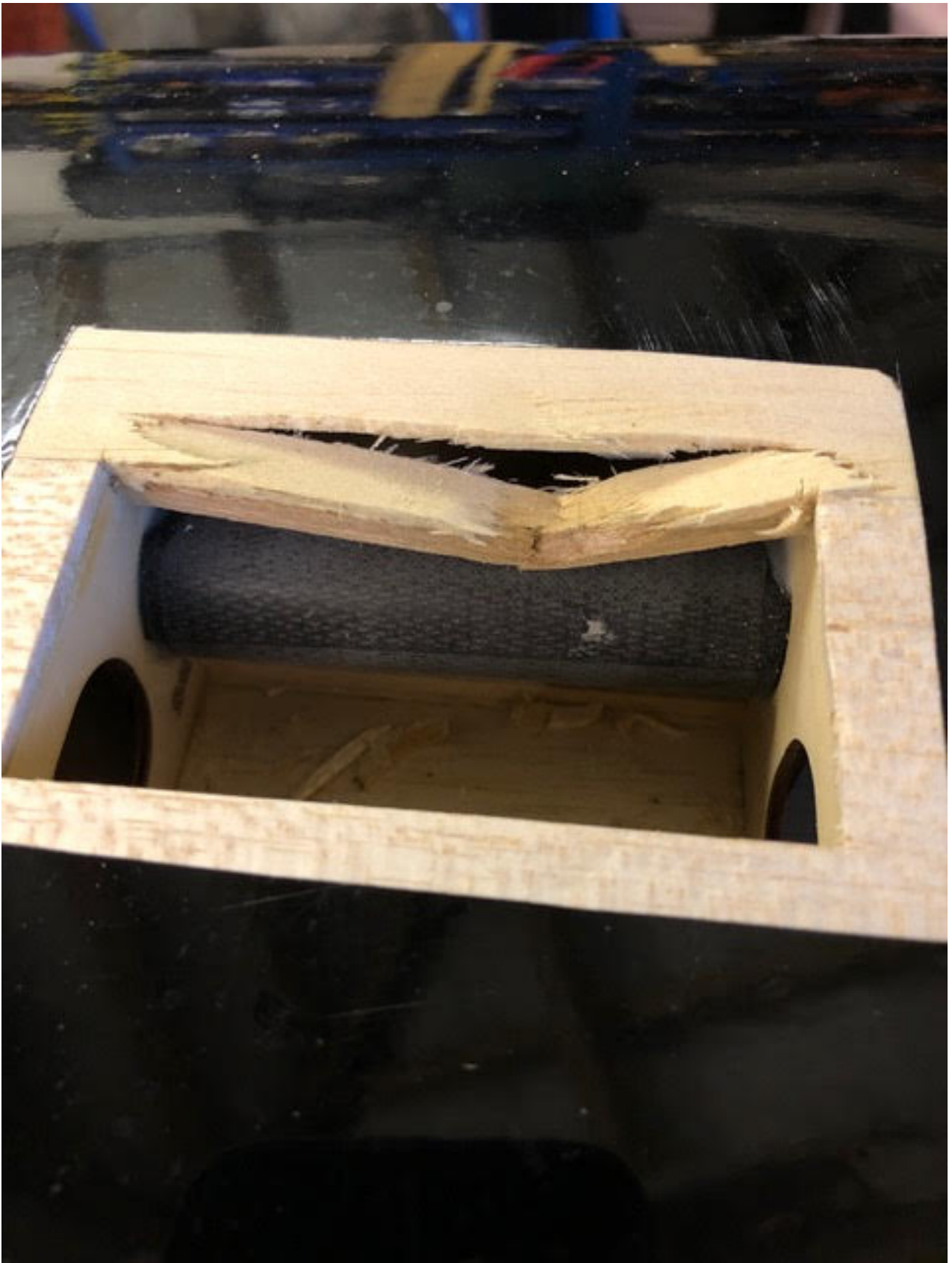


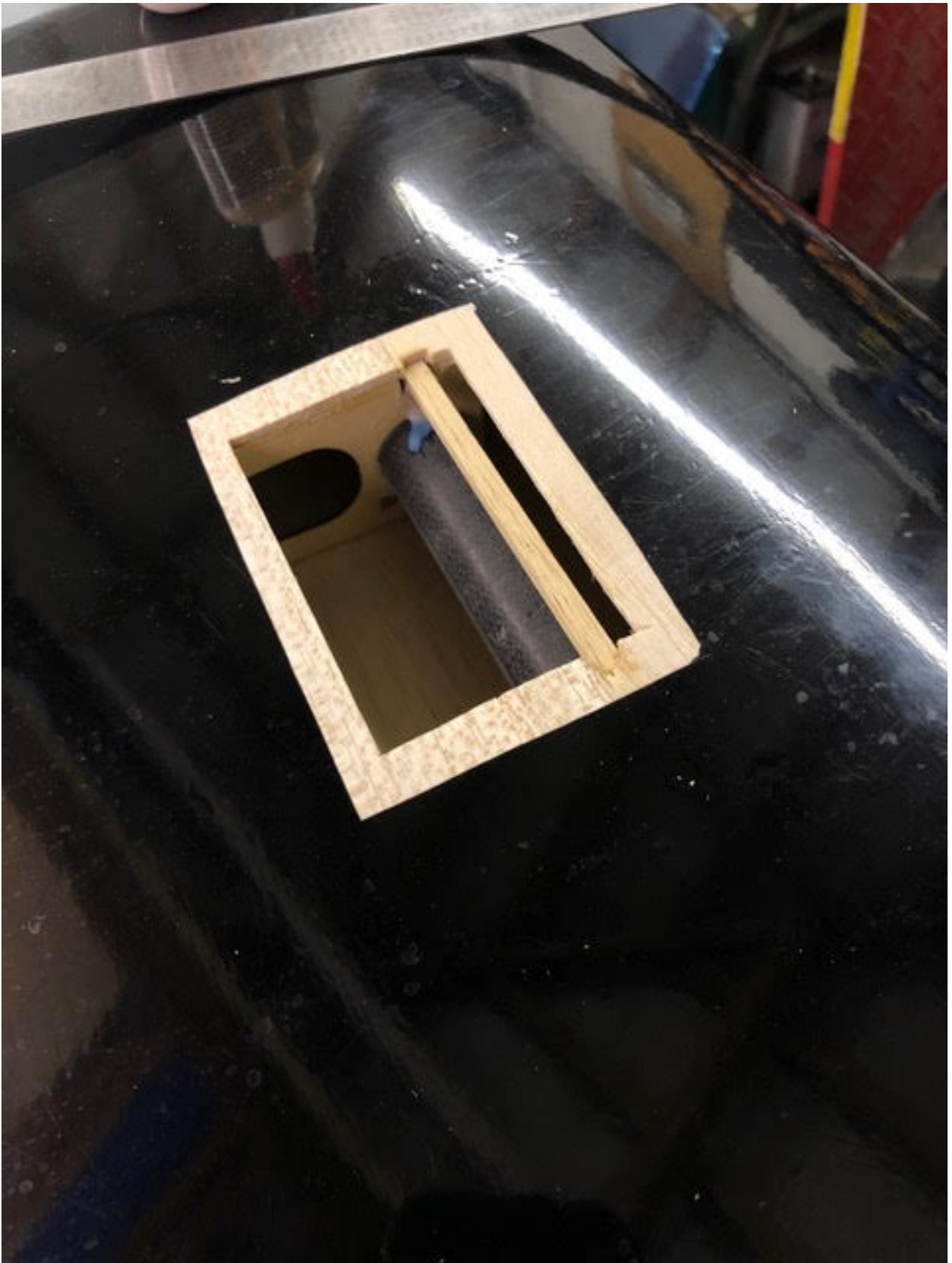
Cutting back the film revealed the full extent of the damage, still nowhere near as bad as I thought it would be.



And repairs done









Covering applied





And finally, the finished model:





I may spend a bit of time remodelling the cowl as it has been cut out for different engine so there are quite a few redundant holes / cut outs. But the main job is done and can't wait to get it back in the air with its new engine (probably will run the engine up in the garden next week when the new CDI unit arrives from Morris Mini Motors.

So what's the next job? Hmm, recovering the SIG Rascal is on the list but that's quite a daunting task as it's the 110" one!