

Ron Gray, Bowman Spatman Build

This build was all about trying to re-create a great fun flyer I had back in the early 80's, a Bowman Spatman powered by an OS 15 and controls on Rudder, Elevator and Throttle. Despite having only 3 channels my memory tells me that it could roll and spin with no problems! But I first had to cut my own foam wings (see [earlier post on this website](#) for details of this).

After the success of the foam cutting I decided to progress the build so stuck the balsa LE to the foam cores. This time I'm using Gorilla Glue clear which I've not used before, the brown expanding type and the white one being my usual ones.



LE sanded to profile



and wings joined together



Cut out the fuselage sides, ply doublers and tailplane and fin.



Made up the balsa former using my magnetic building board for the first time in ages



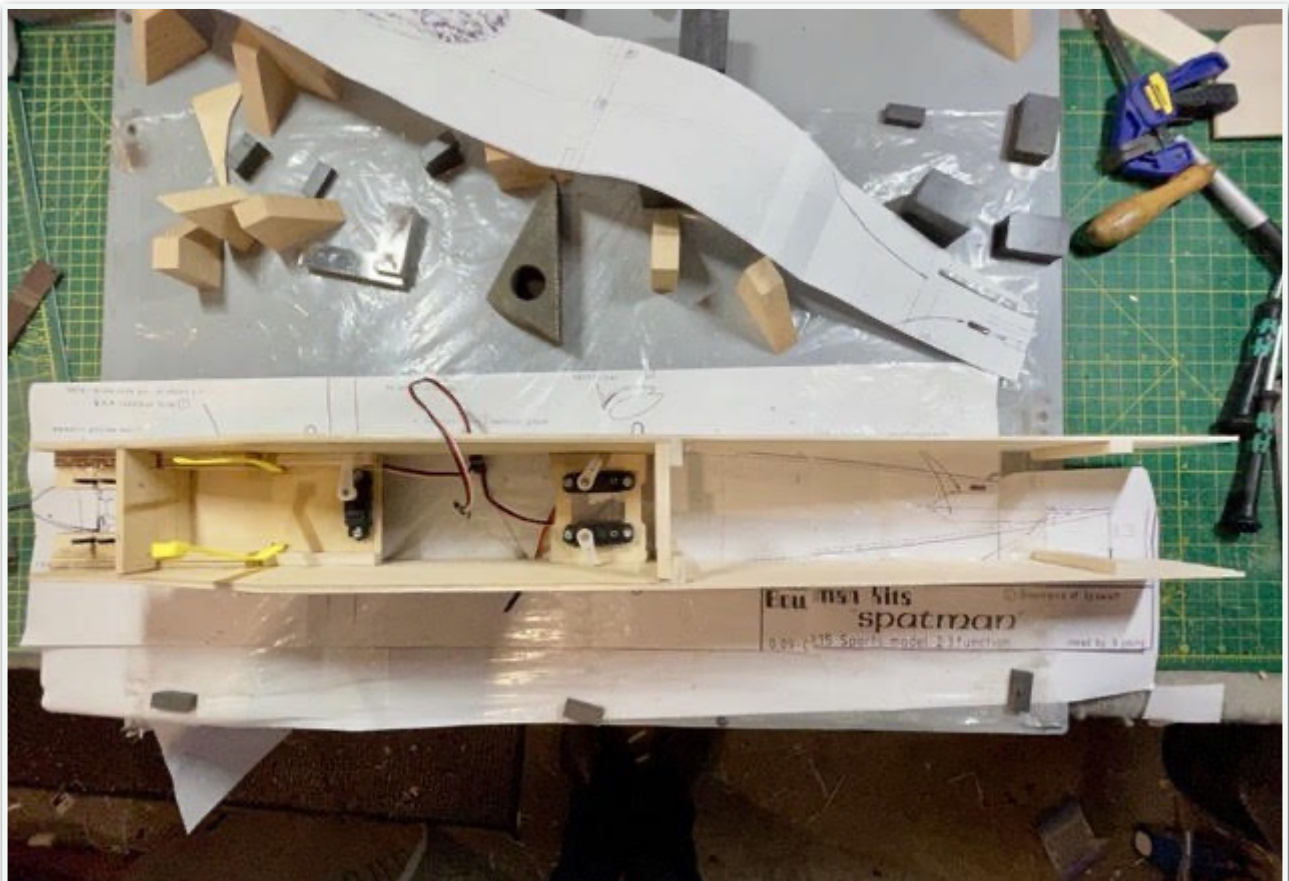
Glued the ply doublers to the fuselage sides



Engine bearers installed, front & mid former fitted and fuselage sides joined.



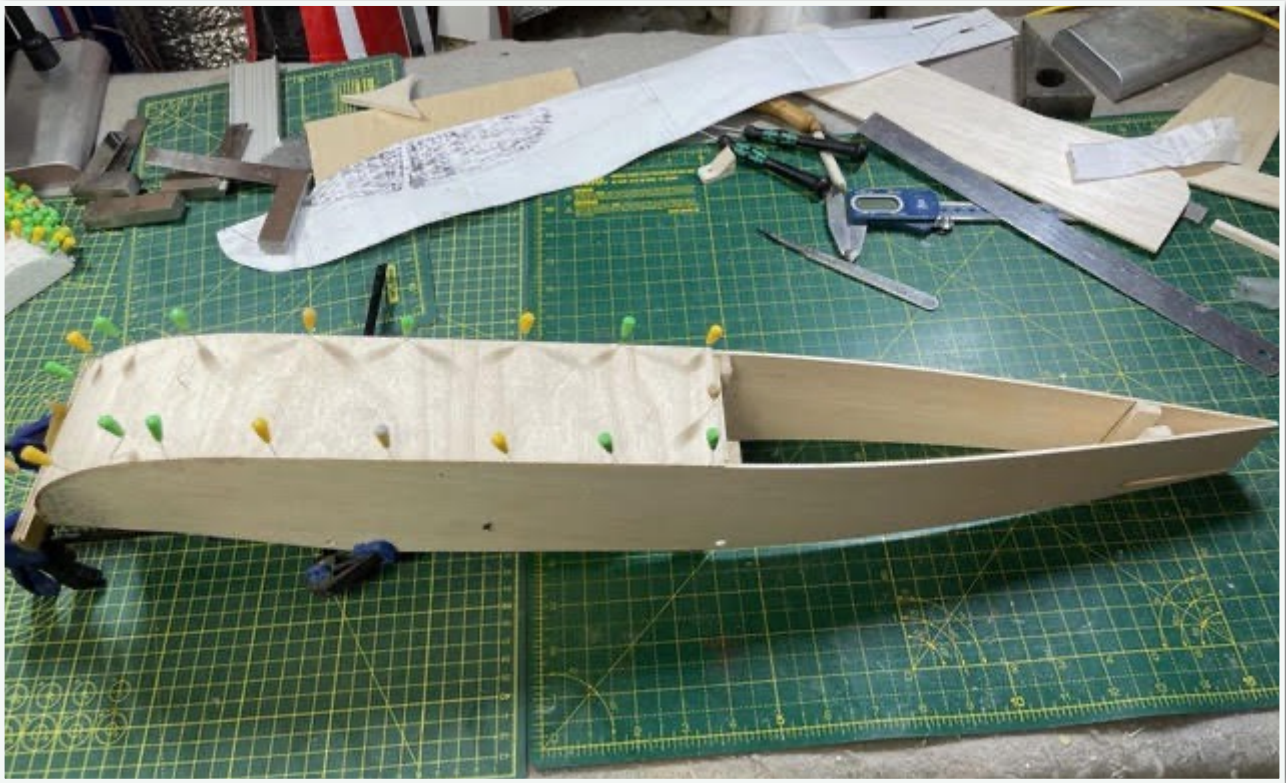
Servo tray and tank / throttle servo platform added.



Some black spray applied to engine bay and fuselage sides brought together.



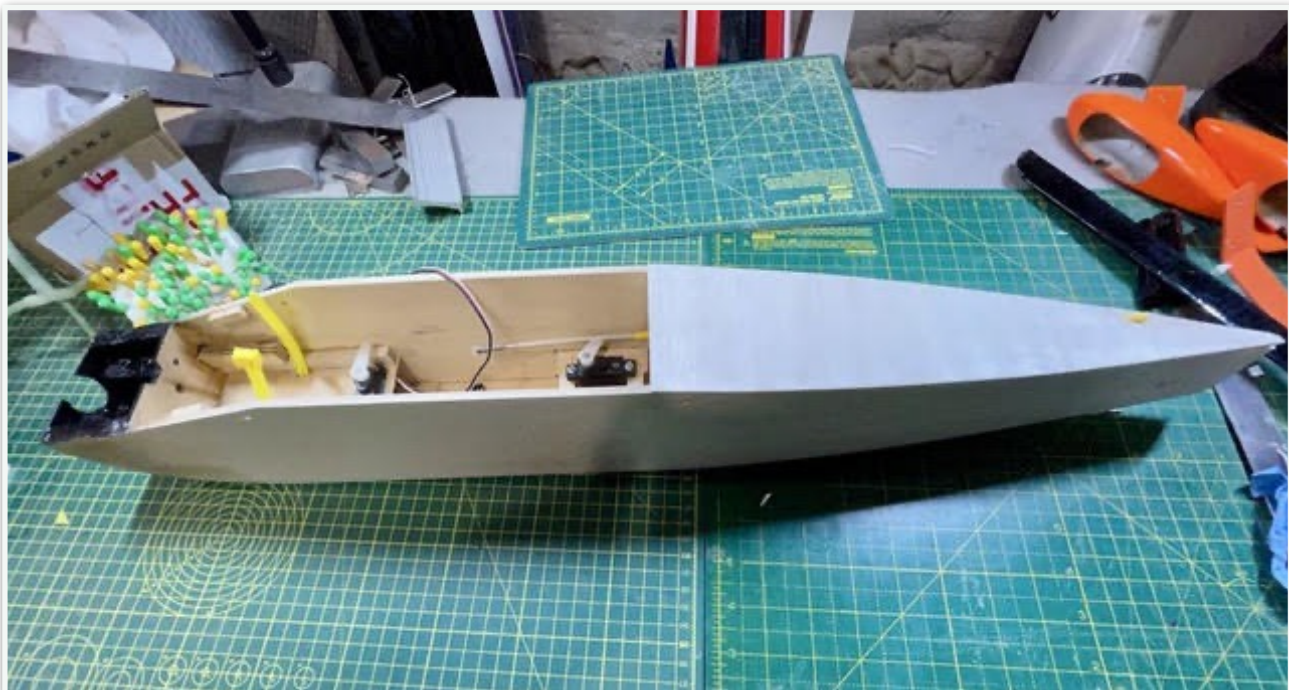
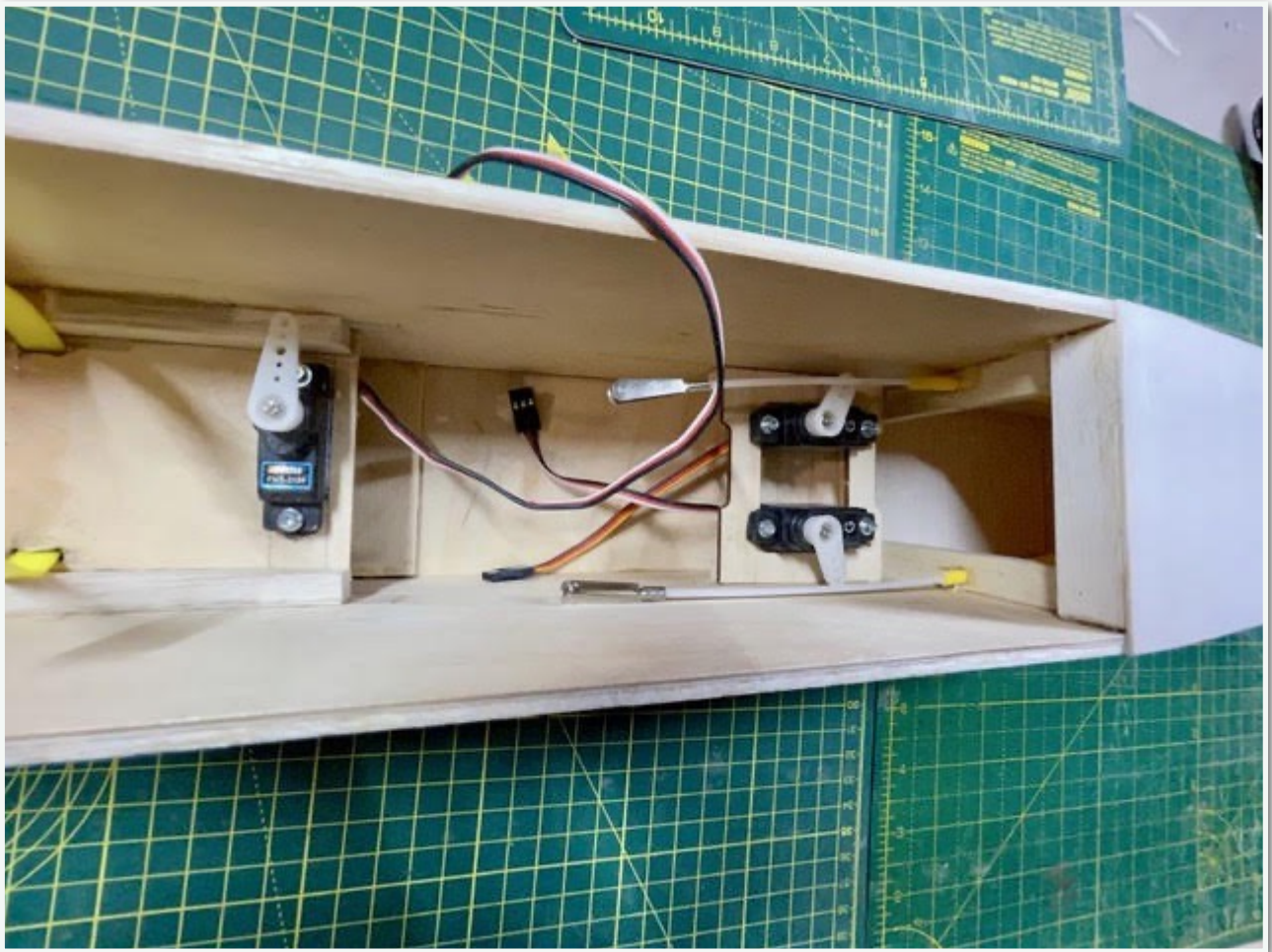
Underside ply sheeting was preformed whilst damp then attached. I've added a ply U/C mounting plate to the inside of the ply sheeting.

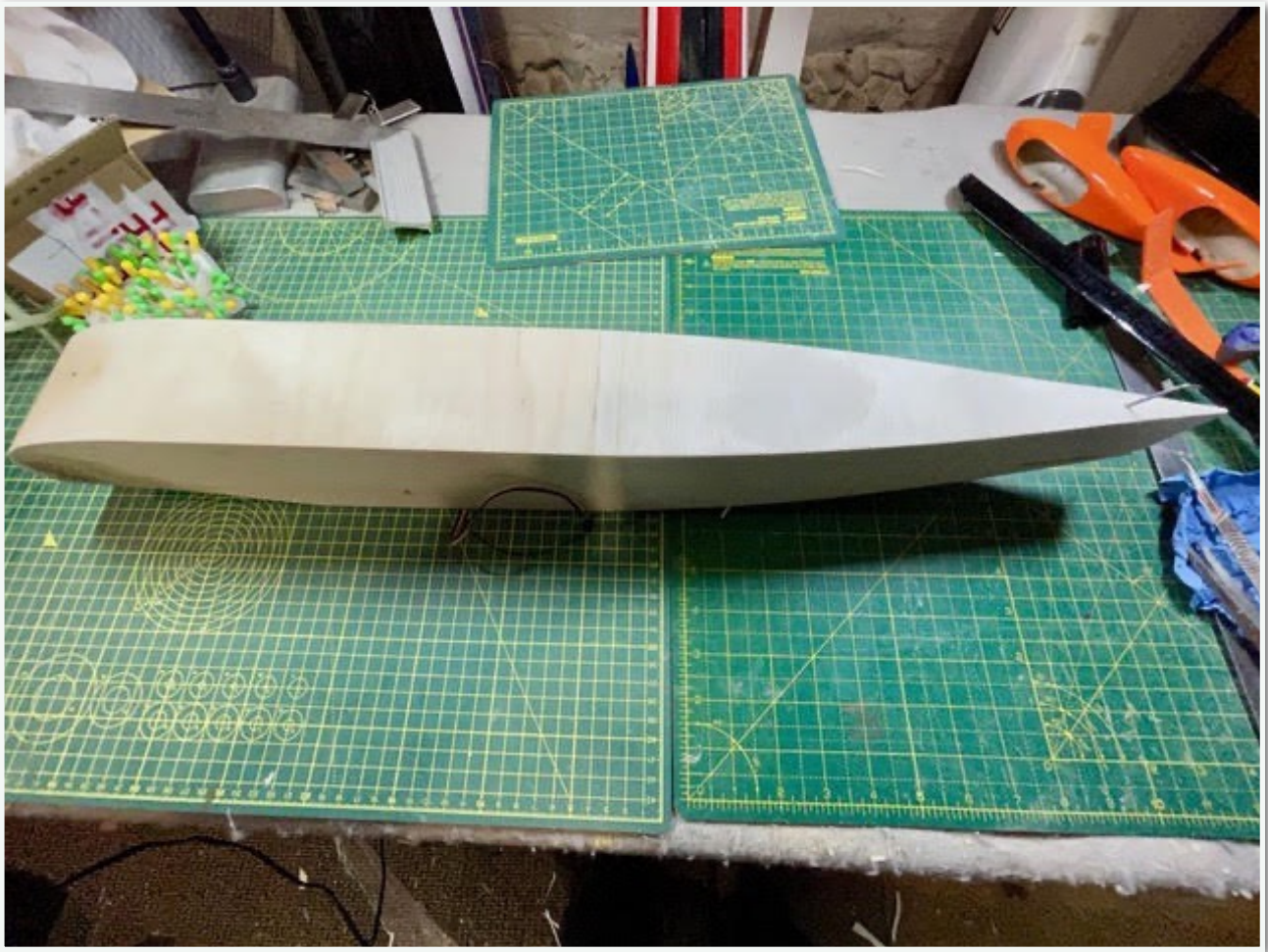


And I even had time to cover the wing in laminating film.



Control snakes installed and the balsa sheeting added to the fuselage, together with tail skid; I did think about fitting a tailwheel but decided to keep it as per the original (plan that is as mine never had U/C as I only flew from rough fields).

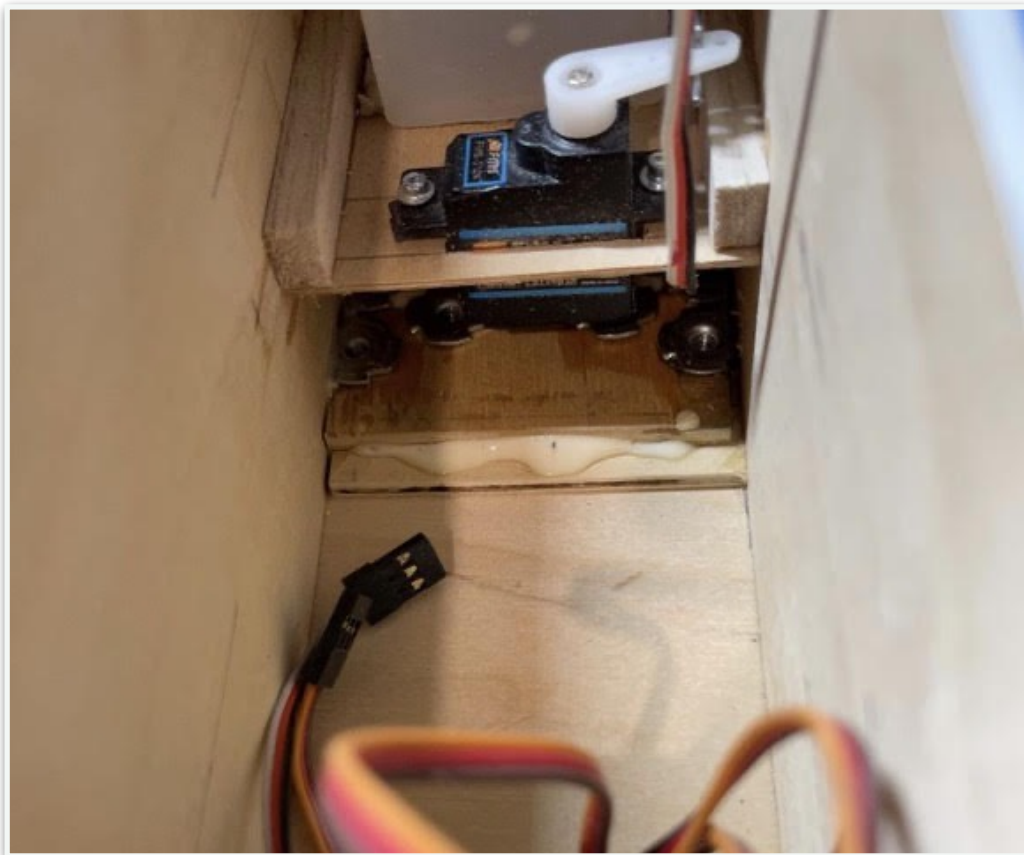




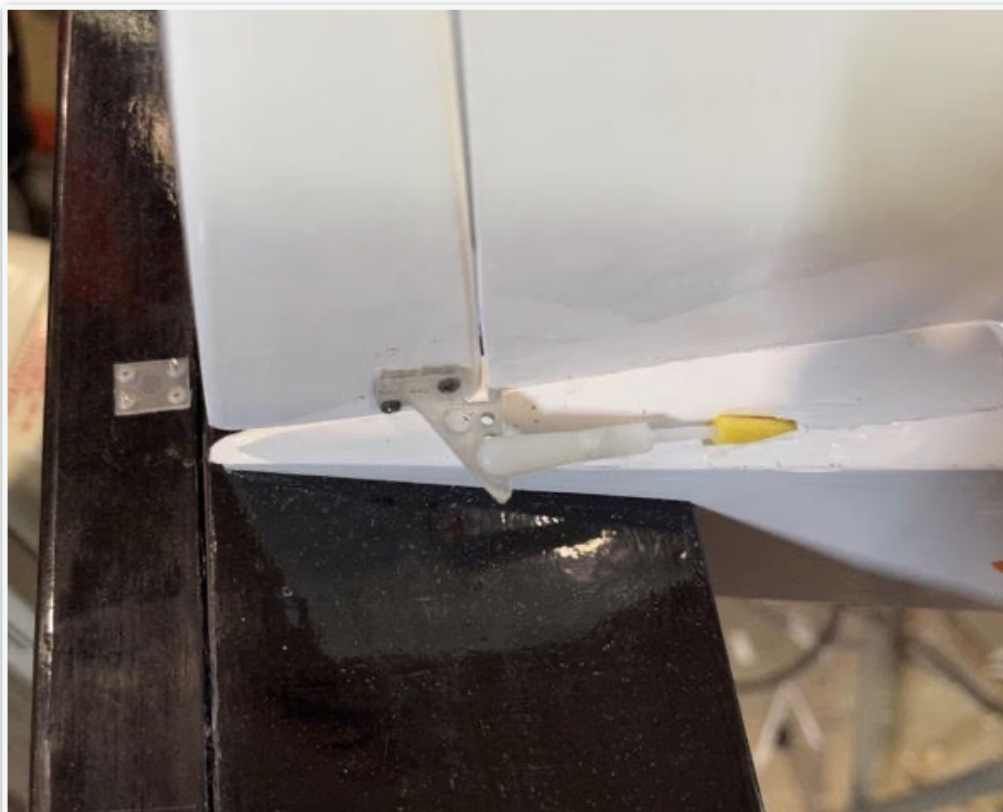
And then some covering. My wife suggested that it would be nice to try and replicate my original one so here goes.



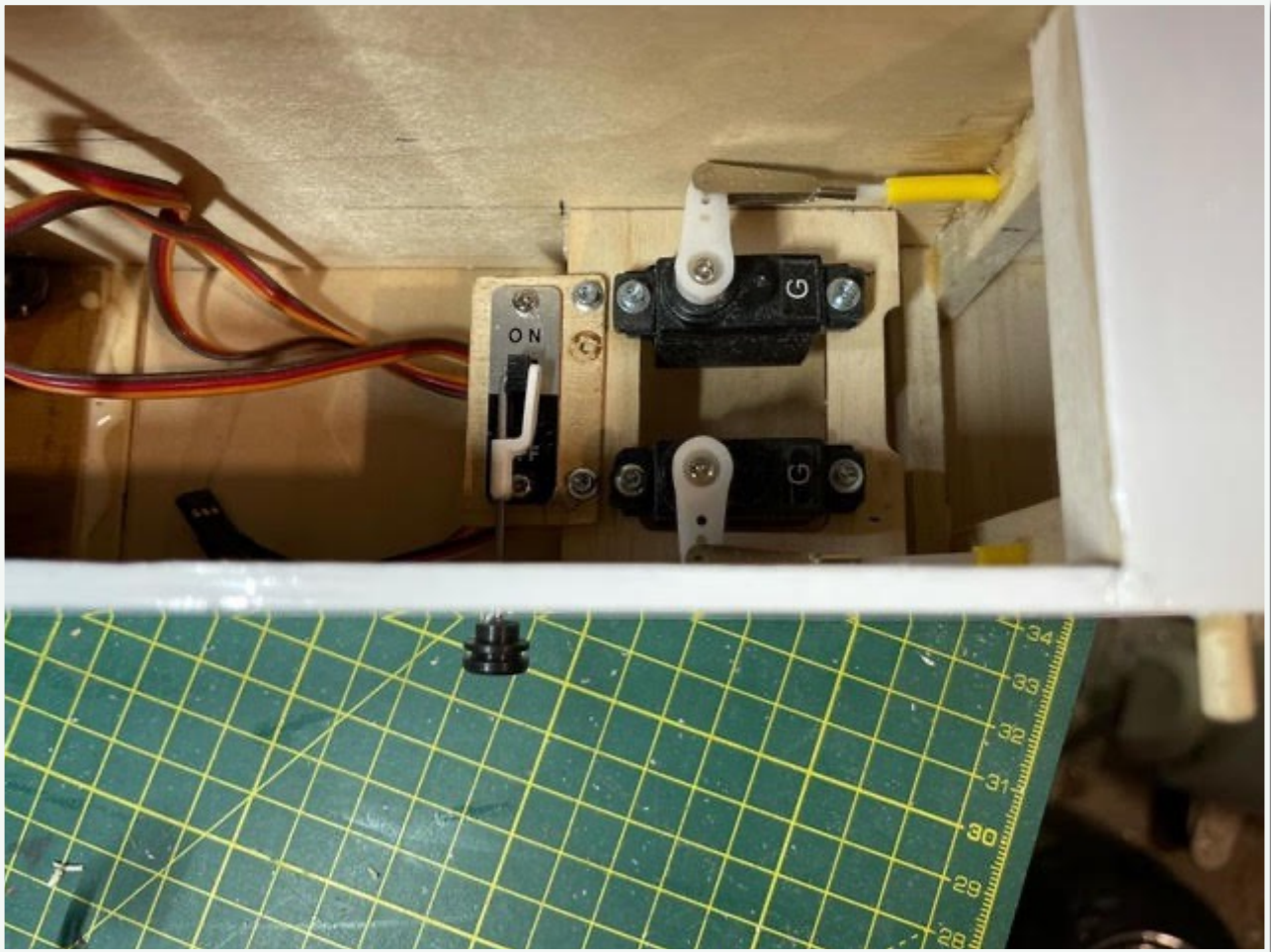
More, final,
small, fiddly
bits done.
U/C mounting
plate glued to
bottom of fuse



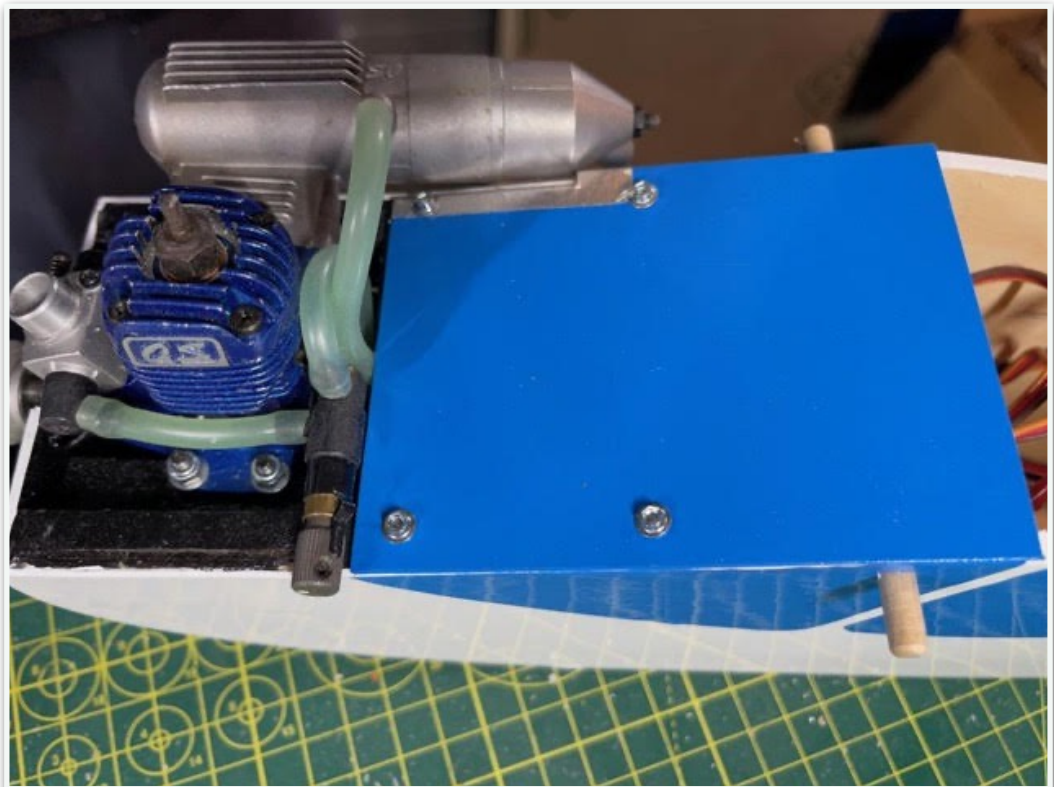
Control horns and pushrods fitted (boy were they fiddly).



RX switched fitted.



Top cover
made
removable so
that I can get
to fuel tank if
necessary
plus heat
reflective tape
added.



Well, it's finished and all ready to fly!



