

# 15 May Visitor Directions & Site Plan

*This is about finding the site and parking.*

*There's a separate, detailed, [site map](#) for flyers.*

## Knettishall Airfield Location

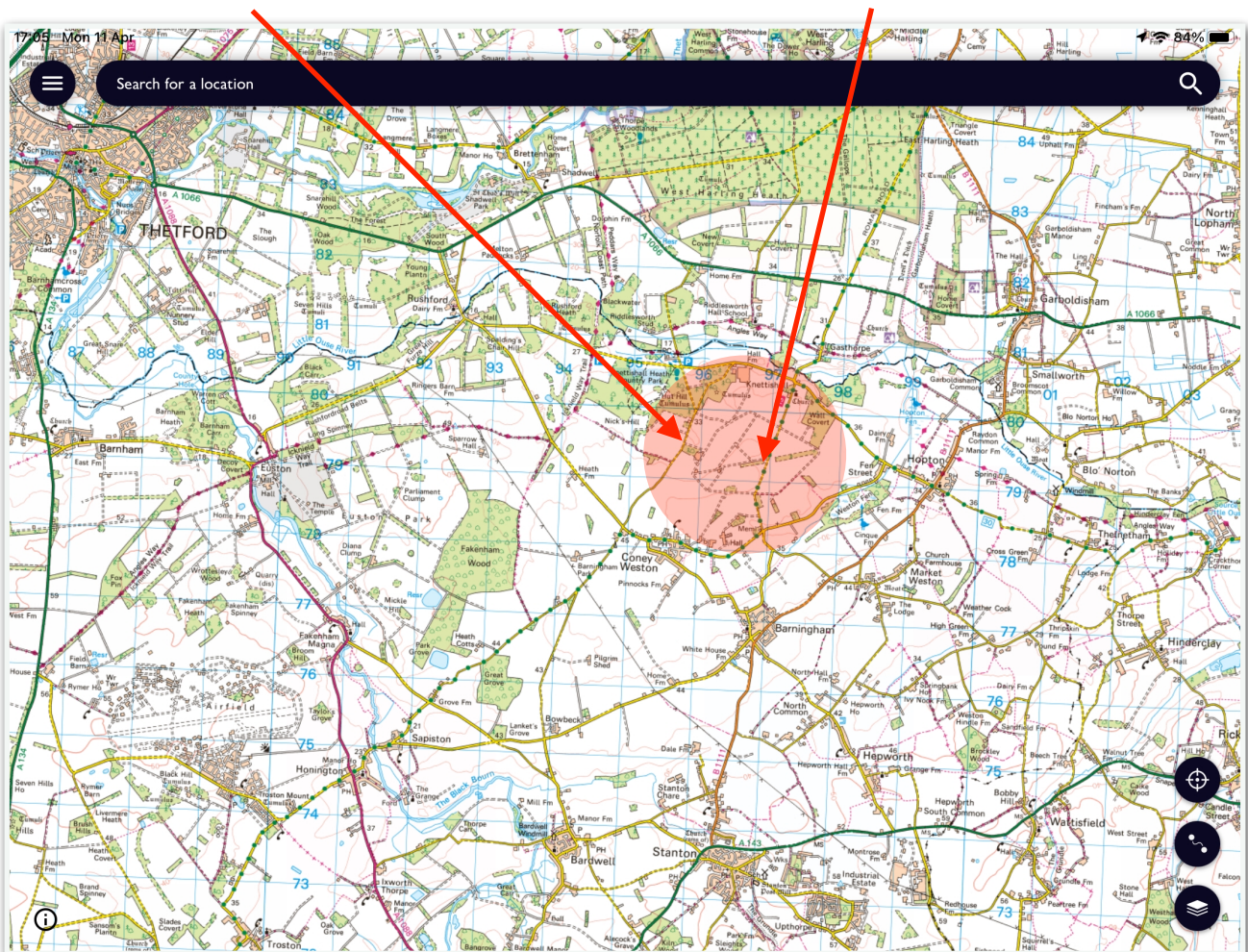
The entrance we are using is the 'factory gate'.

If you use Google Maps, enter "9VHG+C36 Diss" in the search field for the gate location.

If you use 'What 3 Words' navigate to "encroach.marinated.showrooms"...meaningless but it marks the spot!

**Knettishall Airfield**

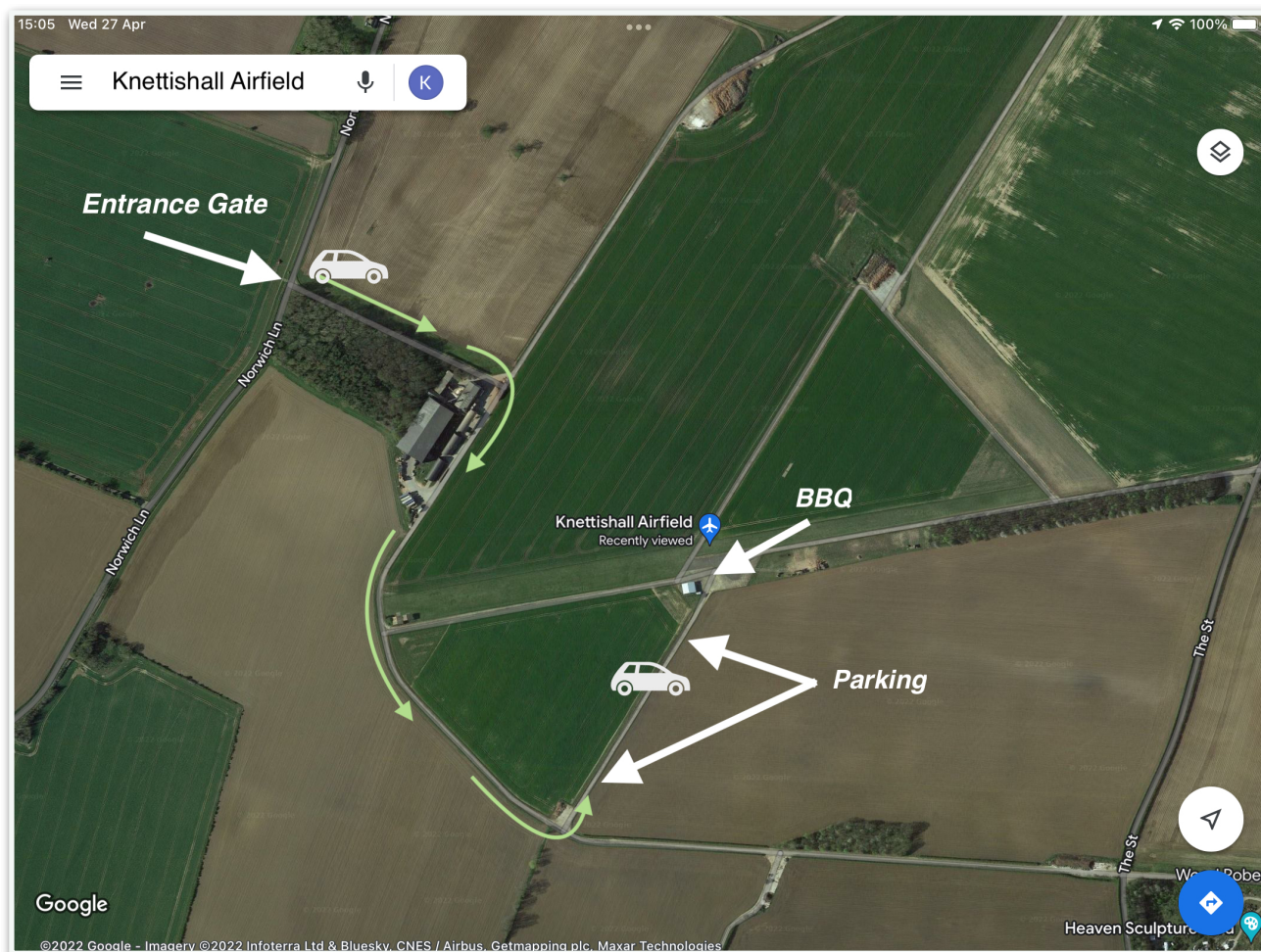
**Entrance gate**



*Map courtesy of the Ordnance Survey*

# Knettishall Airfield Access

The entrance we are using is the 'factory gate'



*Map courtesy of Google*

Please leave the gate on the latch after you enter/exit.

Then, minding two sleeping policeman after the gate, follow the track to the right passing beside the factory area, then past the first 2 hangars on the airstrip to your left and on round to the lane we use for parking. Those 2 hangars are at the western end of the runway...so take care of light aircraft arriving or leaving - thankfully rare.